

Postdoctoral Position. Cancer Epigenetics and Biology Program

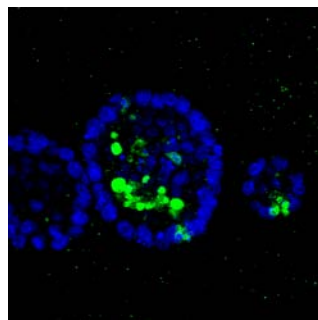
We are looking for motivated postdoctoral scientists who wish to work in a scientific stimulating environment and with an interest in breast cancer biology. Candidates must hold a PhD in a relevant discipline with an outstanding publication record. A background in molecular biology, primary cell culture, mouse handling and histology will be valued.

Bellvitge Institut for Biomedical Research (IDIBELL) offers a contract to join the Transformation and Metastasis group led by Dr. Eva González-Suárez within the Cancer Epigenetics and Biology Program (PEBC). PEBC is a department of recent creation directed by Manel Esteller and located in the Hospital Duran i Reynals at the Bellvitge Campus.

The primary goal of the group led by Eva González-Suárez is to understand the signaling pathways implicated in normal mammary gland development and their alterations during breast cancer and metastasis, and to evaluate the role of cancer stem cells in mammary tumorigenesis. We have a multidisciplinary approach using mouse models, cell cultures, clinical samples and molecular biology techniques to translate basic research into clinically relevant results.

Starting date: January 2011

Applications must include a CV with a cover letter and contacts for 2 references. Please submit applications to: egsuarez@idibell.cat



***Eva González-Suárez, PhD.
Transformation and Metastasis Group
Cancer Epigenetics and Biology Program PEBC
IDIBELL
Av. Gran Via s/n km 2,7
08907 L'Hospitalet de Llobregat Barcelona Spain
Tel 34932607500 Ext 3166 Fax 34932607219
<http://pebc.cat>***